

ANA BEATRIZ CORTES

HEIGHT	179 - 5' 10.5"
BUST	83 - 32"
WAIST	60 - 23"
HIPS	87 - 34"
SHOES	39 - 9
HAIR	brown
EYES	brown

@anabeatrizcortes_











② DIOR



LOOK 01
Little red dress,
GIVENCHY VOGUE



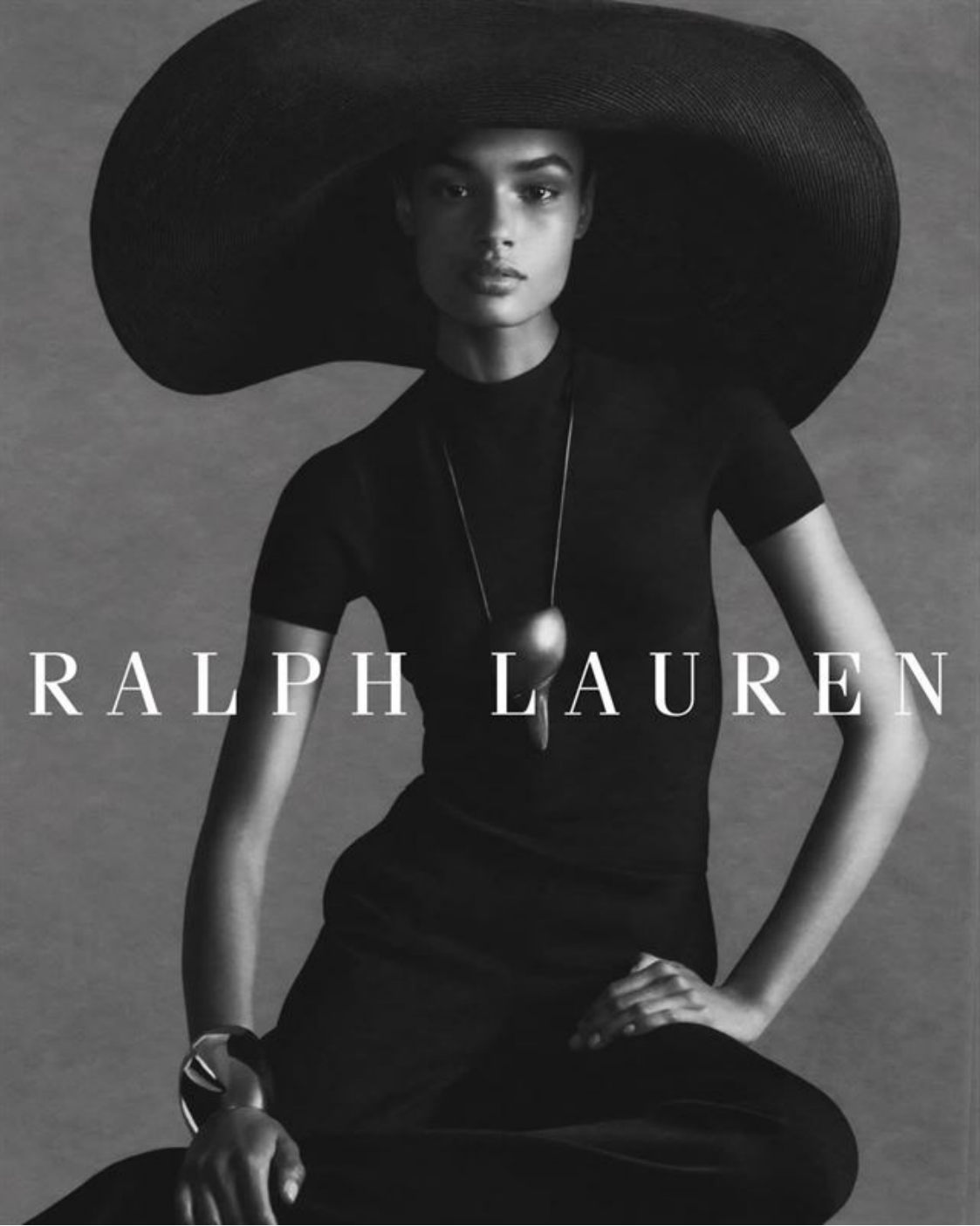








MICHAEL KORS



RALPH LAUREN

