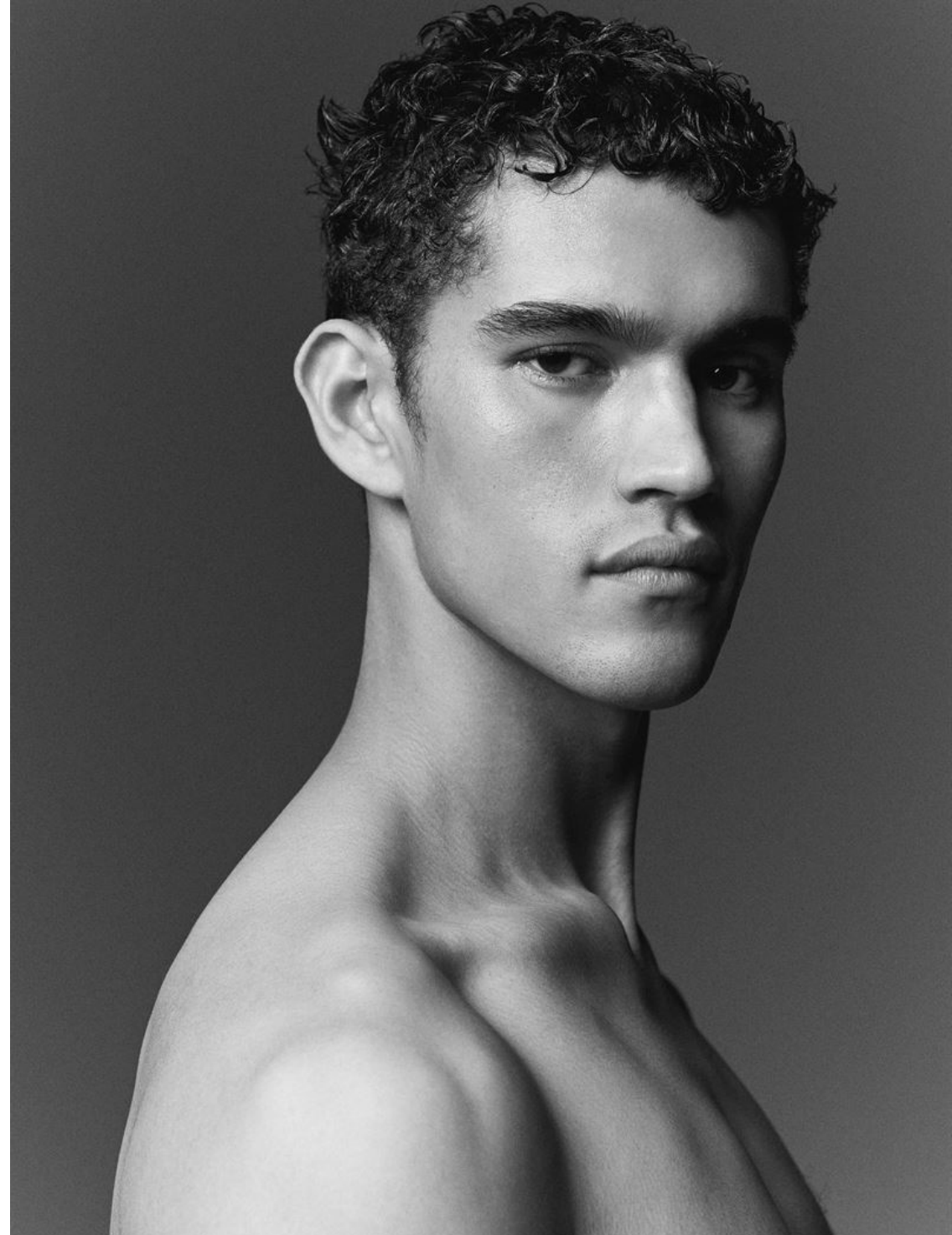


BODHI HEECK

HEIGHT	190 - 6' 2.5"
BUST	95 - 38"
WAIST	77 - 30"
HIPS	96 - 38"
SHOES	44 - 10.5
HAIR	BROWN
EYES	BROWN

@bxdhi





GIORGIO ARMANI



GIORGIO ARMANI



Photographer

VALENTIN HENNEQUIN

Fashion Editor

CHIARA SPENNATO

MODELS

Andrew Barabash - Crew Model Management

Bodhi Heeck - Known Model Management

Francois Delacroix - The Claw Models

GROOMING

Erisson Musella - Blend Management using Schwarzkopf

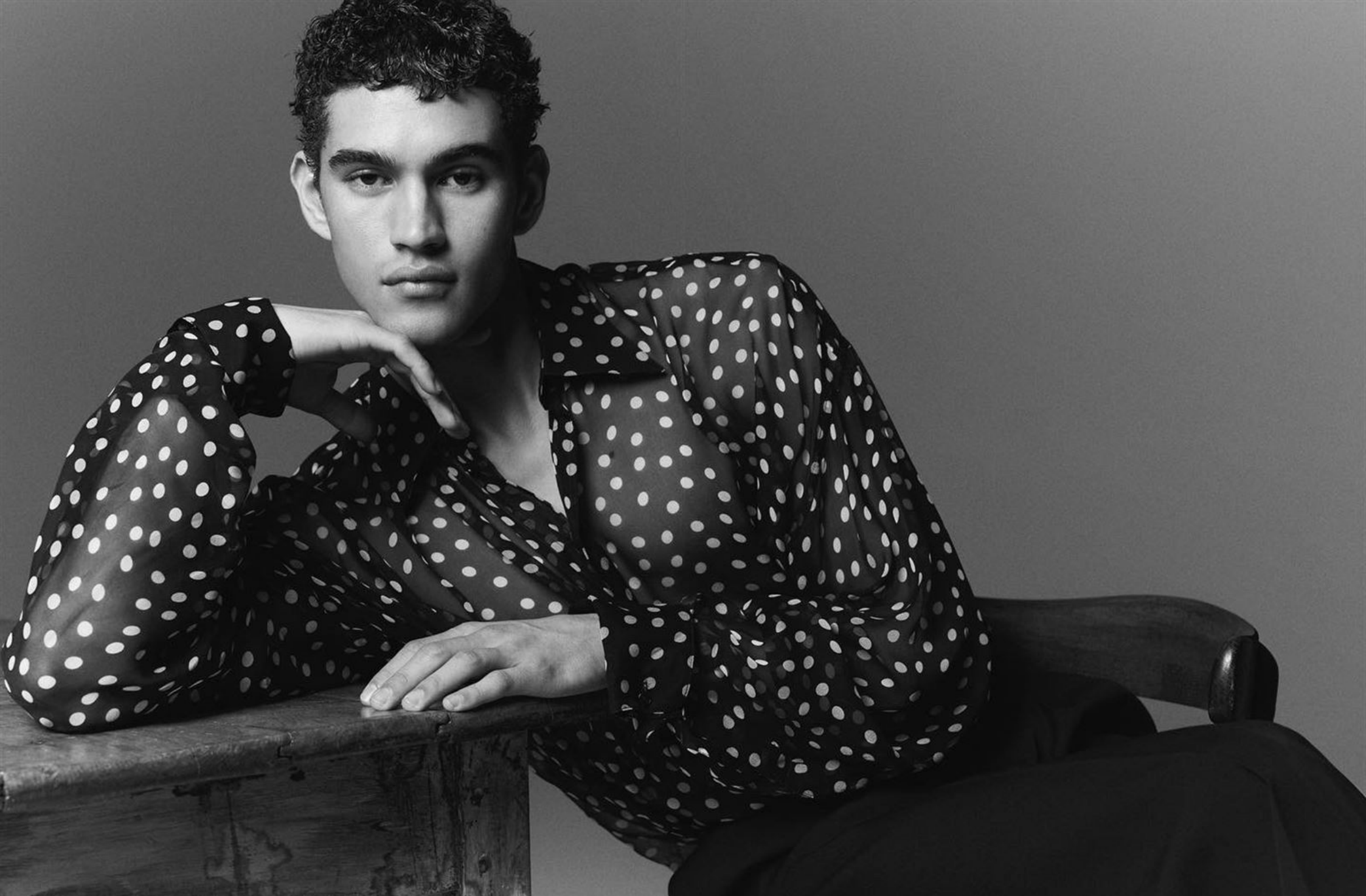
CASTING

Isadora Banaudi

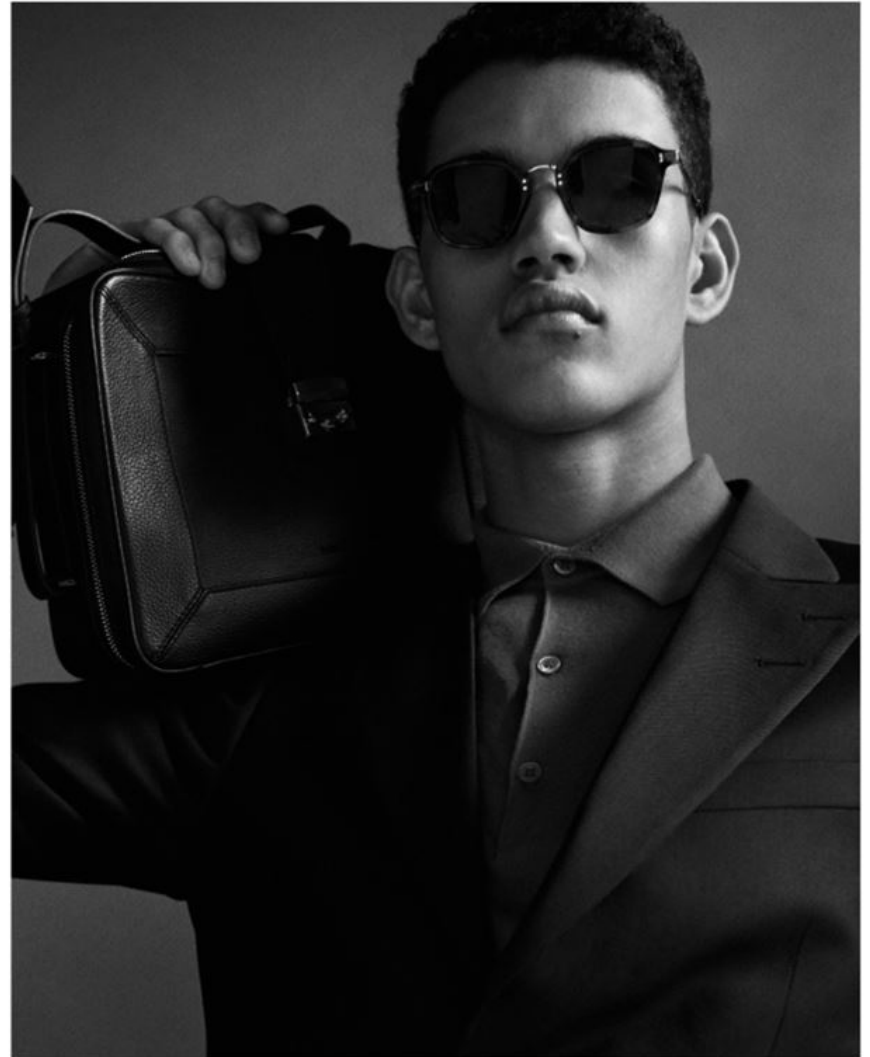


Francis wears Top 3-PARADIS - Jeans CELINE HOMME - Choker STYLIST'S OWN
Bodhi wears Tank Top and Shoes CELINE HOMME - Jeans DIESEL - Choker STYLIST'S OWN
Opposite Page Francois wears Top 3-PARADIS













KARL
KARL LAGERFELD









POSTER BOY

ISSUE 02

POSTERBOYMAGAZINE.COM

PHOTOGRAPHY
BARRIE HULLEGIE

STYLING
JORDY HUIJNDER

SET DESIGN
SANNE KETELAAR

MODELS

ALPHA DIA@MODELWERK
BODHI@KNOWN MODEL MANAGEMENT
DOEKE@KNOWN MODEL MANAGEMENT

ERIK@THE BAND MANAGEMENT
KOSTA@KNOWN MODEL MANAGEMENT
YAW TIËKU@THE MOVEMENT MODELS

ALPHA DIA, YAW TIËKU
BY JAN FUITE@NCL REPRESENTATION

GROOMING
BODHI, DOEKE, KOSTA, YAW TIËKU
BY KATHINKA GERNANT

ERIK
BY CARLOS SAIDEL

CALVINKLEIN.COM
CDLP.COM

GYM2DECOR.NL
KVRTSTVFF.COM

STOCKLIST

NAHKA.NL
THEWHITEBRIEFS.COM

UNRECORDED.CO
ZIPPERVINTAGECLOTHING.COM

FOUNDERS & CREATIVE DIRECTION

JORDY HUIJNDER & BARRIE HULLEGIE



