

# EFRAIM SCHRODER

<b>HEIGHT</b>	188 - 6' 2"
<b>BUST</b>	94 - 37"
<b>WAIST</b>	71 - 28"
<b>HIPS</b>	90 - 35"
<b>SHOES</b>	43 - 10
<b>HAIR</b>	light brown
<b>EYES</b>	brown

@efraimschroder



# DE BOSSA



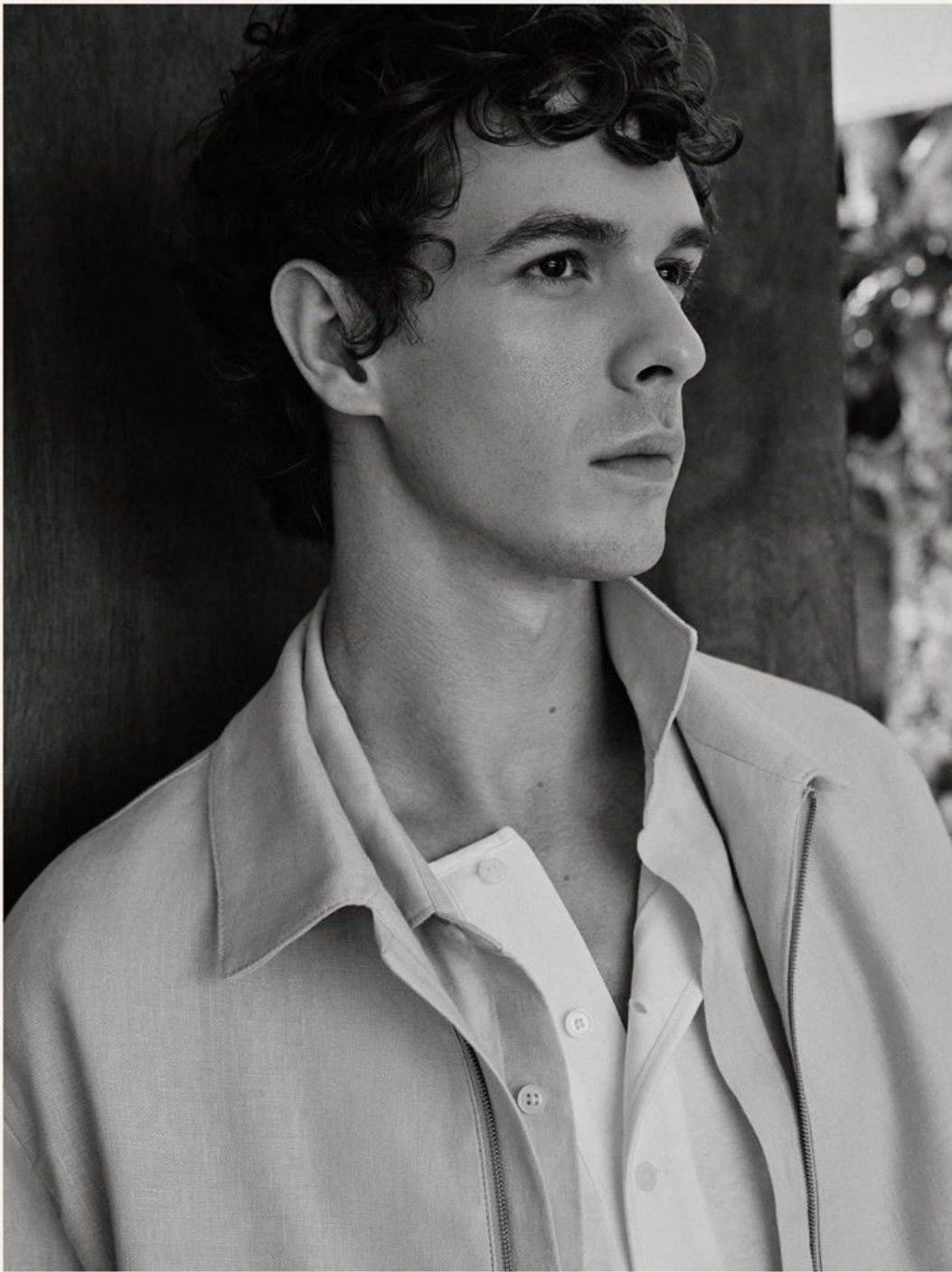
**O RIO  
DE JANEIRO**

**'25**

black linen, raw, and  
impossibly sophisticated.



**BRASIL, 25**













*Giubbino e T-shirt di cotone  
Saint Laurent by Anthony Vaccarello,  
sciarpa di cotone Dior Homme*

*Modello: Efraim Schroder - Soul Artist Mgmt  
Grooming: Edward Lampley - Bryant Artists  
Assistenti fotografo: Mitch Stafford, Eduardo Silva  
Operatore digitale: Jeanine Robinson  
Assistente stylist: Ivan Dutton  
Assistente groomer: Jessica Dylan Hwang  
Postproduzione: Maria Fimmano*



*Giubbino in twill di lana Salvatore Ferragamo,  
camicia senza maniche di seta Fendi,  
pantaloni di lana vergine Dior Homme,  
cintura di pelle Giorgio Armani,  
calze Falke e sneakers Lanvin*

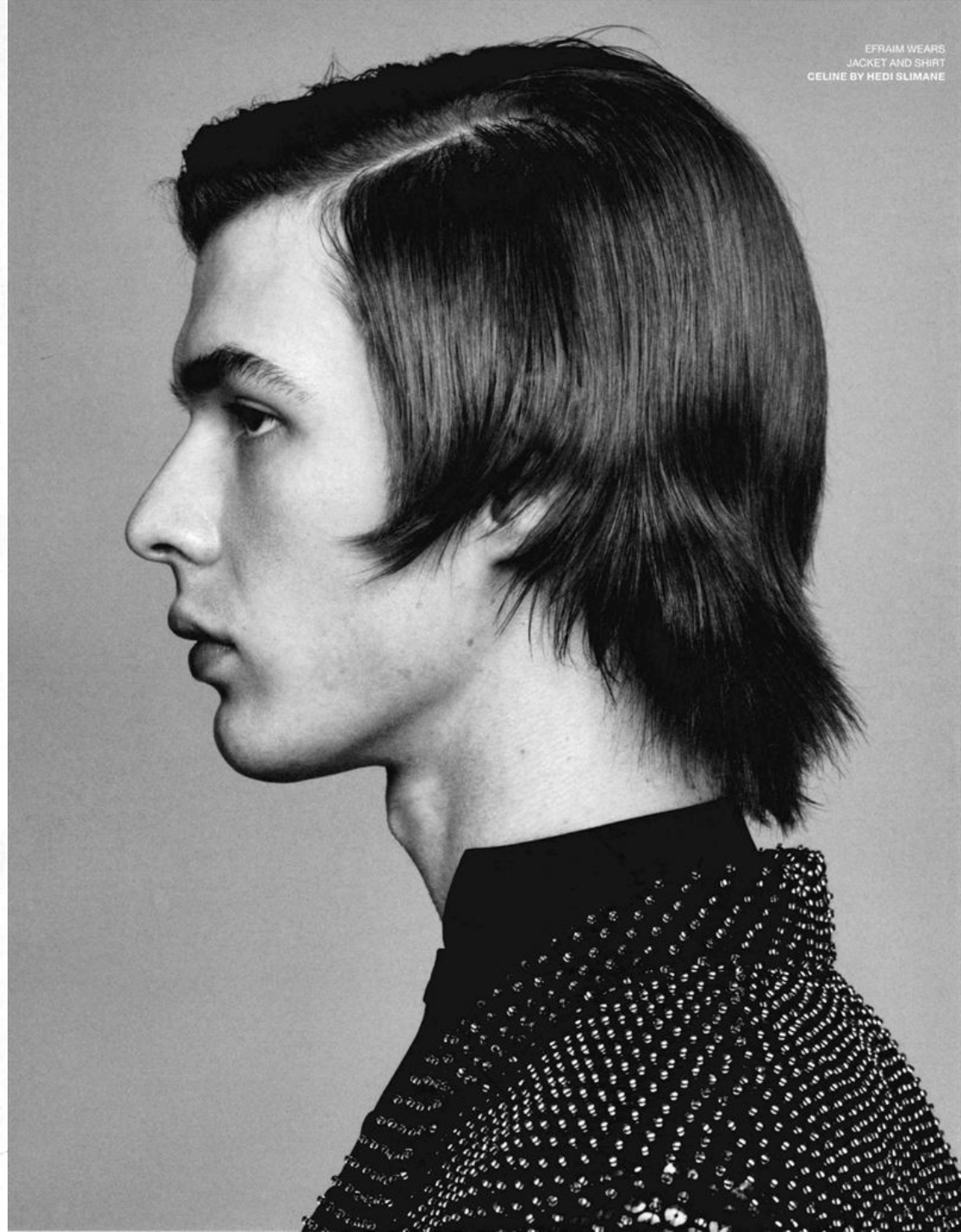












EFRAM WEARS  
JACKET AND SHIRT  
CELINE BY HEDI SLIMANE

Wool mohair overcoat and wool knit embroidered turtleneck jumper *Ralph Lauren*

(Opposite) quilted feather-filled coat, cashmere wool knit turtleneck jumper, cotton, and cashmere wool trousers *Herbol*



Wool tweed coat and wool bouclé jumper *Barban*

(Opposite) wool mohair coat, wool blouson and matching trousers, cotton poplin trousers, calfskin leather shoes with metal Gancini buckle *Salvatore Ferragamo*



HOLLAND  
COSTUME DESIGNER  
SHORTS PRADA







