

# HAMID ONIFADE

**HEIGHT** 190 - 6' 2.5"  
**BUST** 95 - 38"  
**WAIST** 70 - 27"  
**HIPS** 92 - 36"  
**SHOES** 46.5 - 12.5  
**HAIR** black  
**EYES** brown

@iohma











charmschool

PHOTOGRAPHS BY JASON KIBBLER STYLING BY NICK SULLIVAN

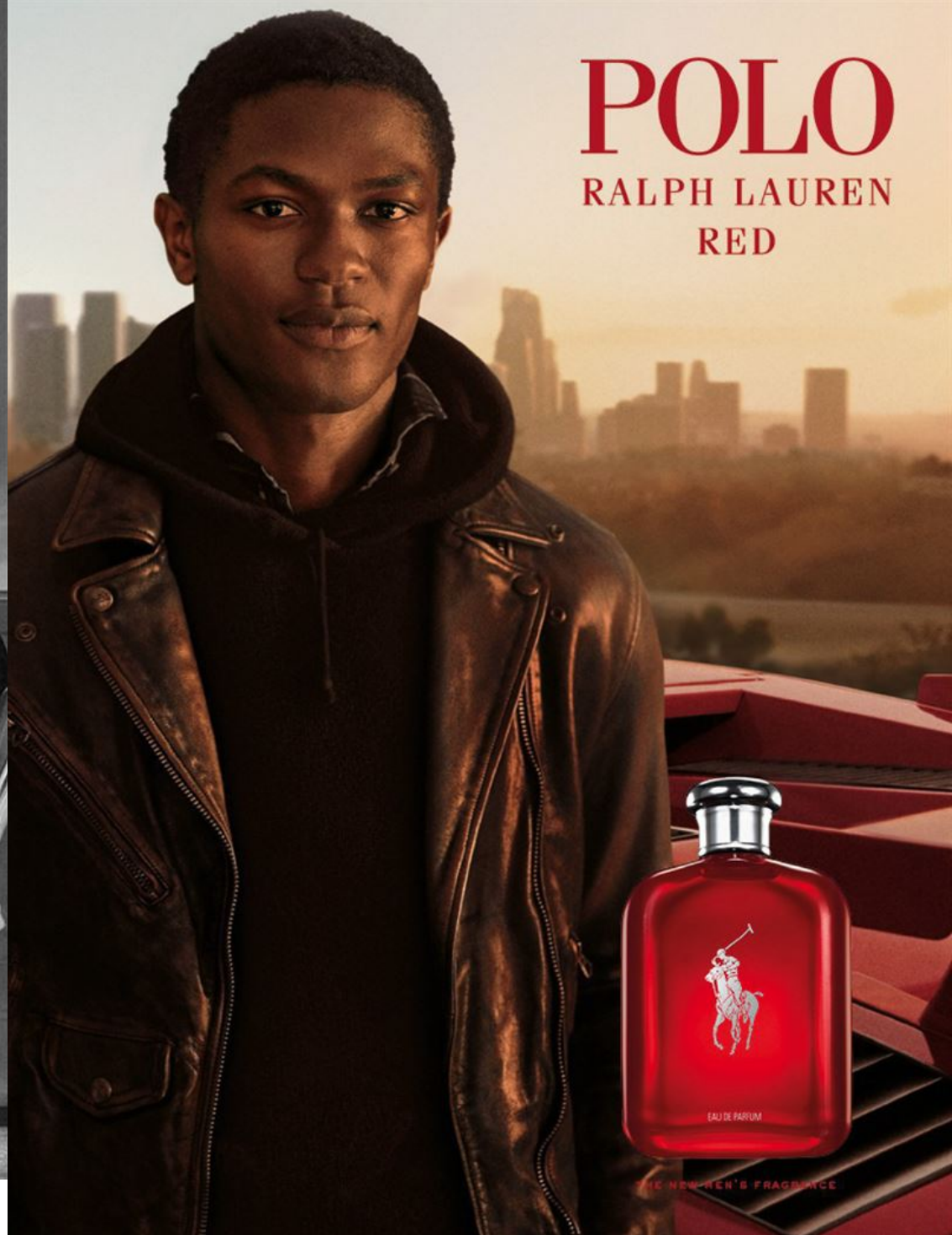
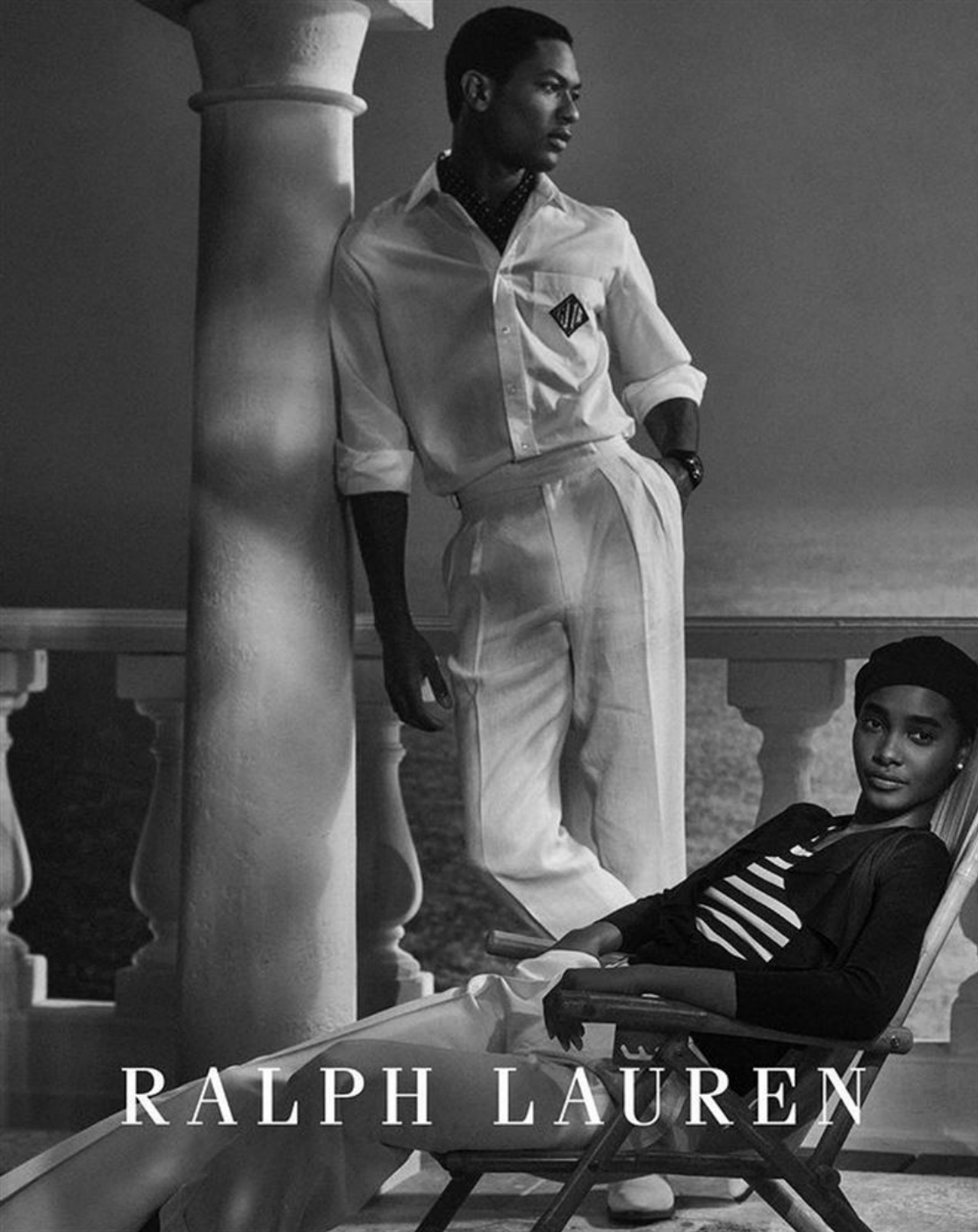








**RAINBOW CONNECTION**  
 Vibrant pieces for the lovers and the dreamers. From left: Araks swimsuit and Ralph Lauren Collection shoes; Berluti Jacket and Charlie by Matthew Zink briefs; Araks swimsuit and Christian Louboutin shoes; Berluti jacket, Mikoh swimsuit and Wandler shoes; Berluti pants, Charlie by Matthew Zink briefs, Christian Louboutin shoes and Patek Philippe watch; Paul Smith jacket, Solid & Stripped swimsuit and Aquazzuno shoes. All settings, models, props, etc. throughout.









all clothing by  
BELSTAFF FW15  
MODELS EVAN  
at AMERICANA,  
MATTHEW at  
FUSION, HAMID  
at RED, RAFAEL  
at REQUEST  
and RONALD at  
WILHELMINA;  
hair SHIN ARIMA  
at FRANK REPPE;  
make-up TRACY  
ALFAJORA at ART  
DEPARTMENT;  
casting EDWARD  
KIM at THE EDIT  
DESK; production  
ELIZABETH  
BUNDLETT at A\*  
PRODUCTIONS;  
photo assistants







