

HUGH BURRY

HEIGHT	189 - 6' 2"
BUST	93 - 36"
WAIST	74 - 29"
HIPS	95 - 38"
SHOES	44 - 10.5
HAIR	brown
EYES	blue

@hugh_burry



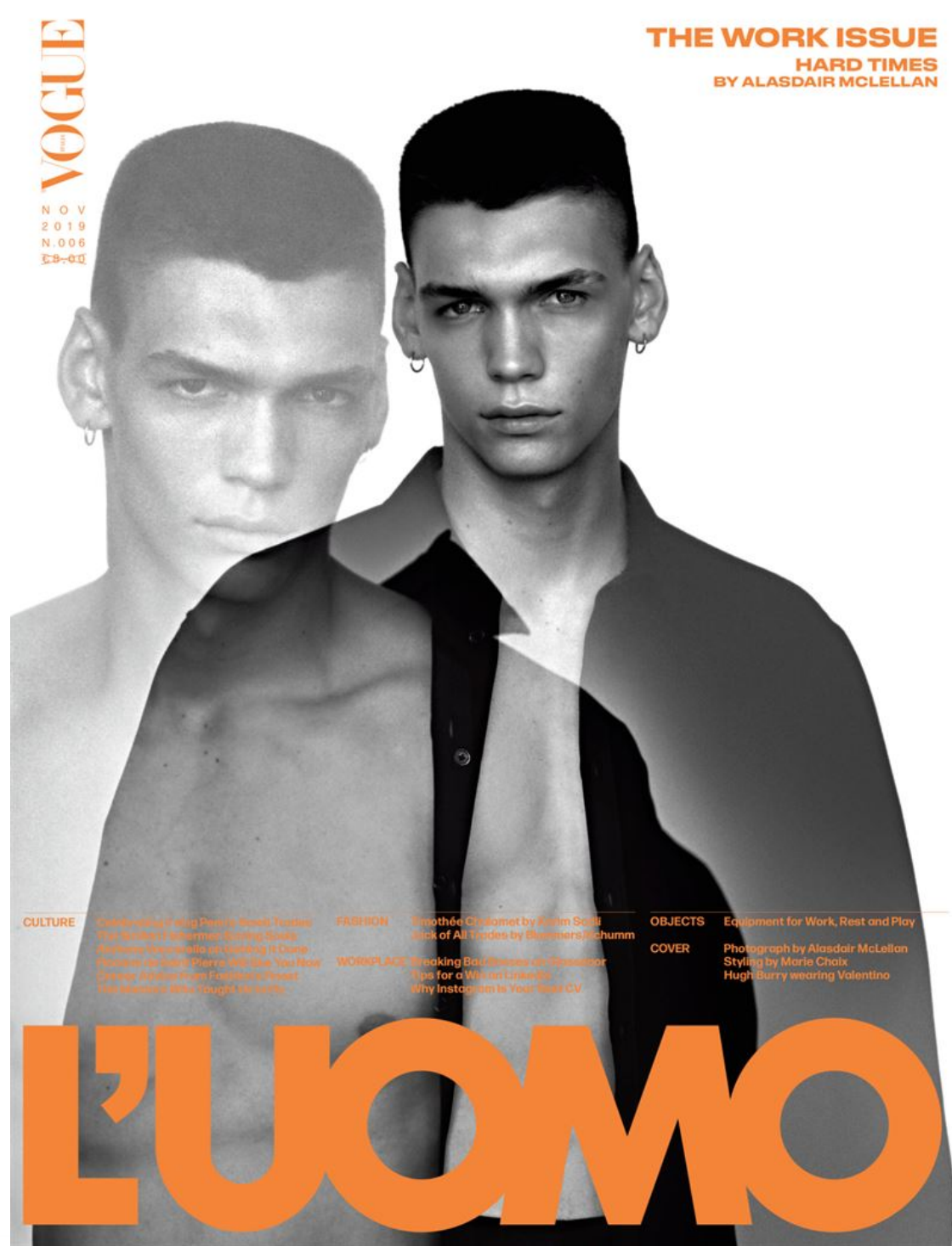








BOTTEGA VENETA



THE WORK ISSUE
HARD TIMES
BY ALASDAIR MCLELLAN

VOGUE
NOV
2019
N.006
00-63

CULTURE *Comedian Craig Peters Swell Teaches The World To Believe: Getting Back To Work After a Fall in the Ring*
FASHION *Timothée Chalamet by Karim Sorji: Sick of All Trends by Blumenschein*
OBJECTS *Equipment for Work, Rest and Play*
WORKPLACE *Breaking Bad: Stress in the Office: Tips for a Win at Work*
COVER *Photograph by Alasdair McLellan Styling by Marie Chaix Hugh Burry wearing Valentino*
Why Instagram Is Your Best CV

L'UOMO







Leather shirt OUR LEGACY

Featuring Hugh Burry at DNA Models
Hair & Make-Up by Yui Sakamoto and Takao Hayashi
Photographer's assistant: Sofia Romero
Stylist's assistants: Margaret Galvin and Danielle Spadola
Special thanks to the Spadola Family

BTB ISSUE 7 FW2019



Pants BALENCIAGA

204 BODY OF WATER







Look completo,
Bottega Veneta

MODELOS: DOMINIC SADOCH © SOUL ARTIST
MANAGEMENT Y HUGH BURRY © DNA.
ASISTENTE DE FOTOGRAFÍA: DANIEL FRY.
DIGITAL TECH: BRYAN TORMEY.
PEINADO: ELSA CANEDO.
MAQUILLAJE: WILLIAM MURPHY
© ATELIER MANAGEMENT.
ASISTENTE DE MODA: ANDRE ADKINS.





