

# ISMAIL DRAMMEH

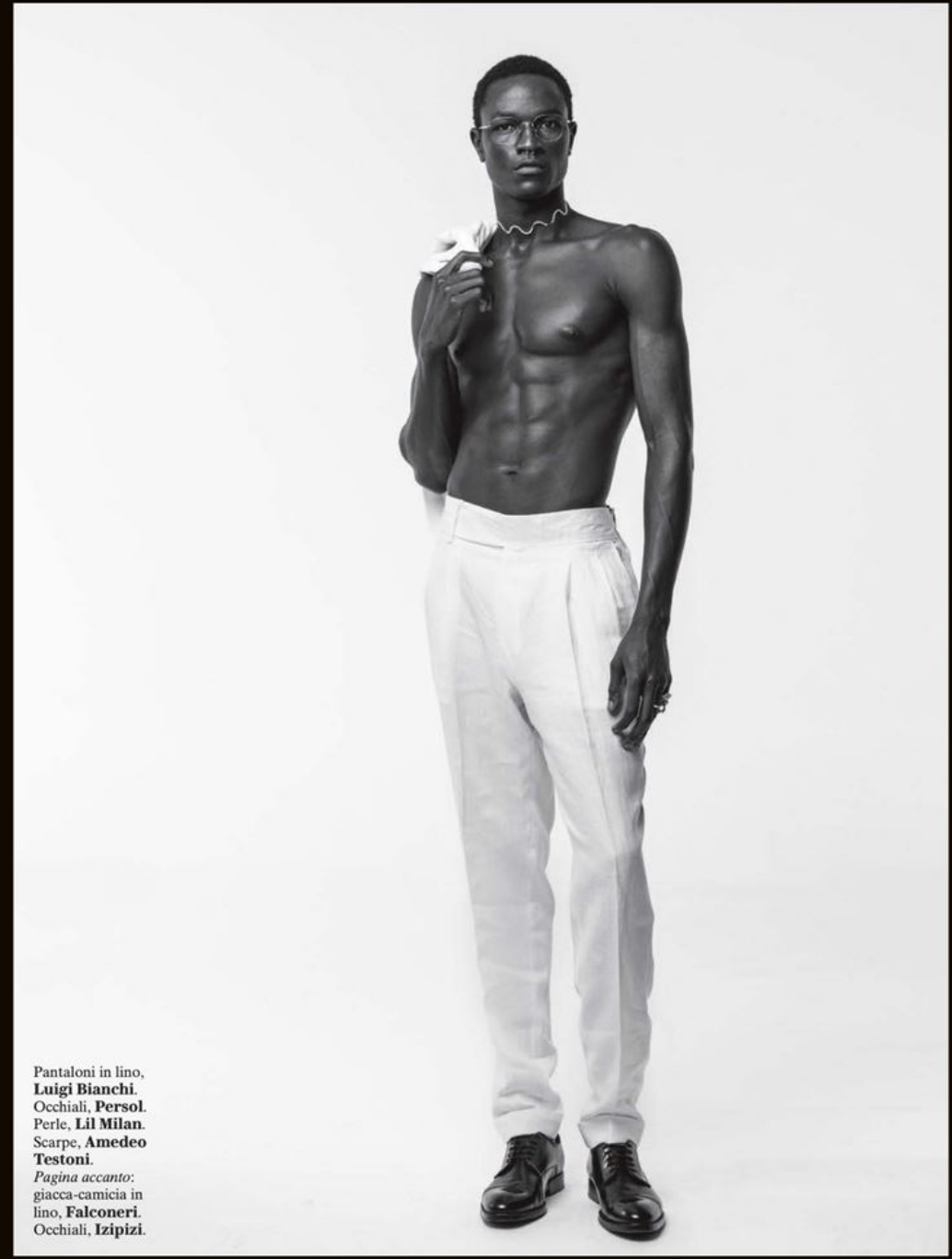
<b>HEIGHT</b>	190 - 6' 2.5"
<b>BUST</b>	95 - 38"
<b>WAIST</b>	73 - 28"
<b>HIPS</b>	91 - 36"
<b>SHOES</b>	44.5 - 11
<b>HAIR</b>	black
<b>EYES</b>	black

@ismaildrammehh





Doppiopetto  
in lana con motivo  
pied-de-poule  
**Circolo 1901.**  
Orecchino,  
**Voodoo Jewels.**  
*Pagina accanto,*  
*per lui:* blazer in  
nylon, **Herno.**  
Cargo pants,  
**Act N°1.** Sandali,  
**Dsquared2.**  
*Per lei:* trench  
in voile di seta,  
**Herno.** Top,  
**Ssheena.**  
Bermuda,  
**Cos Atelier.**  
Platform, **SI**  
**Rossi by Sergio**  
**Rossi.** Gioielli,  
**LeVipere.**



Pantaloni in lino,  
**Luigi Bianchi.**  
Occhiali, **Persol.**  
Perle, **Lil Milan.**  
Scarpe, **Amedeo**  
**Testoni.**  
*Pagina accanto:*  
giacca-camicia in  
lino, **Falconeri.**  
Occhiali, **Izipizi.**

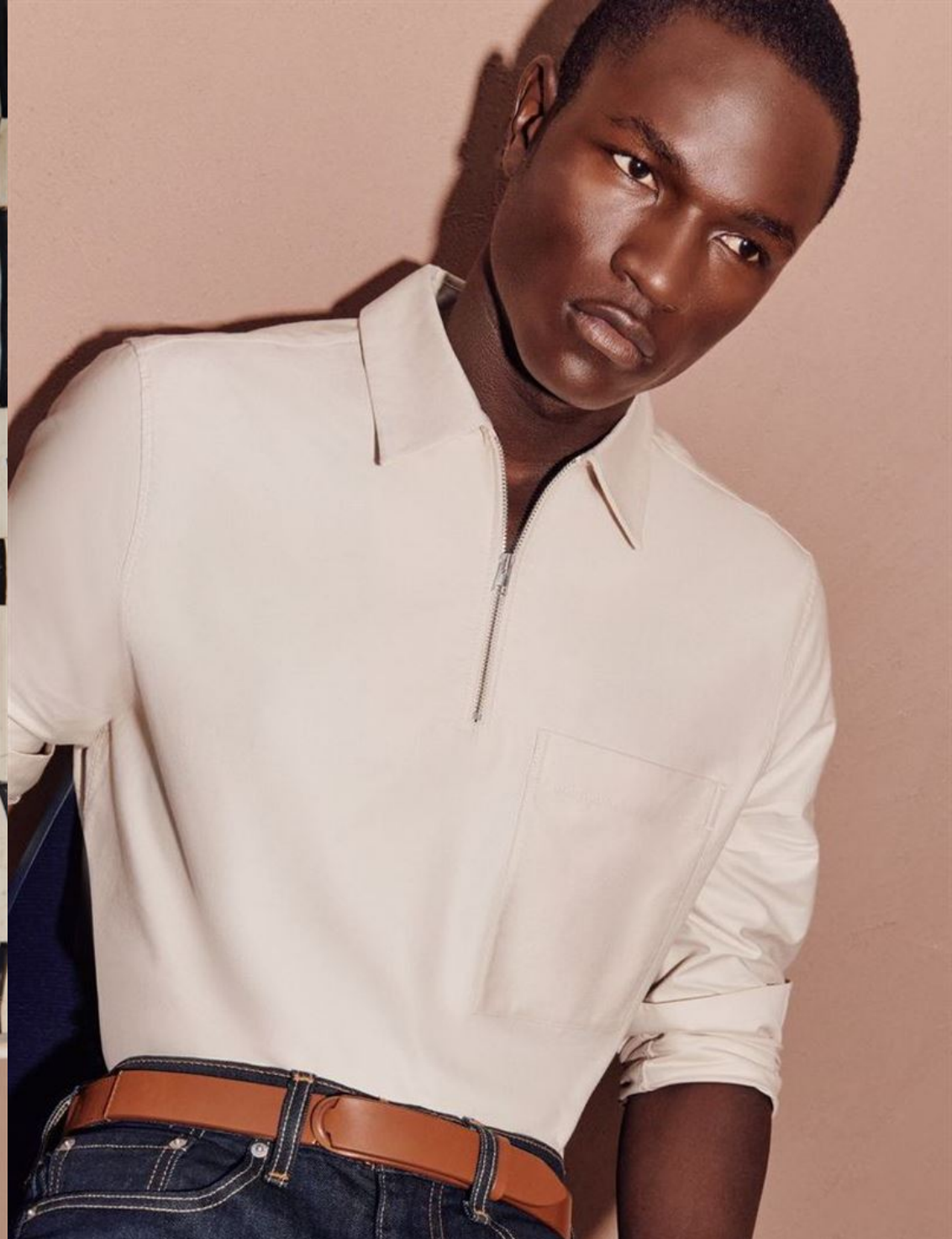














*Abito informale*

Reinterpretazione  
del completo  
classico maschile.  
Total look casual.

Blouson, camicia,  
pantaloni e mocassini,  
Tod's.



*Polo a righe*  
Stile preppy da  
assecondare a quello  
metropolitano: chinos  
e scarpe con carrarmato.

Polo e chinos,  
Jacob Cohën.







*Sealup*  
MILANO 1935

*Sealup*  
MILANO 1935



FALL WINTER 2021



*RRD*

robertoriccidesigns

---