

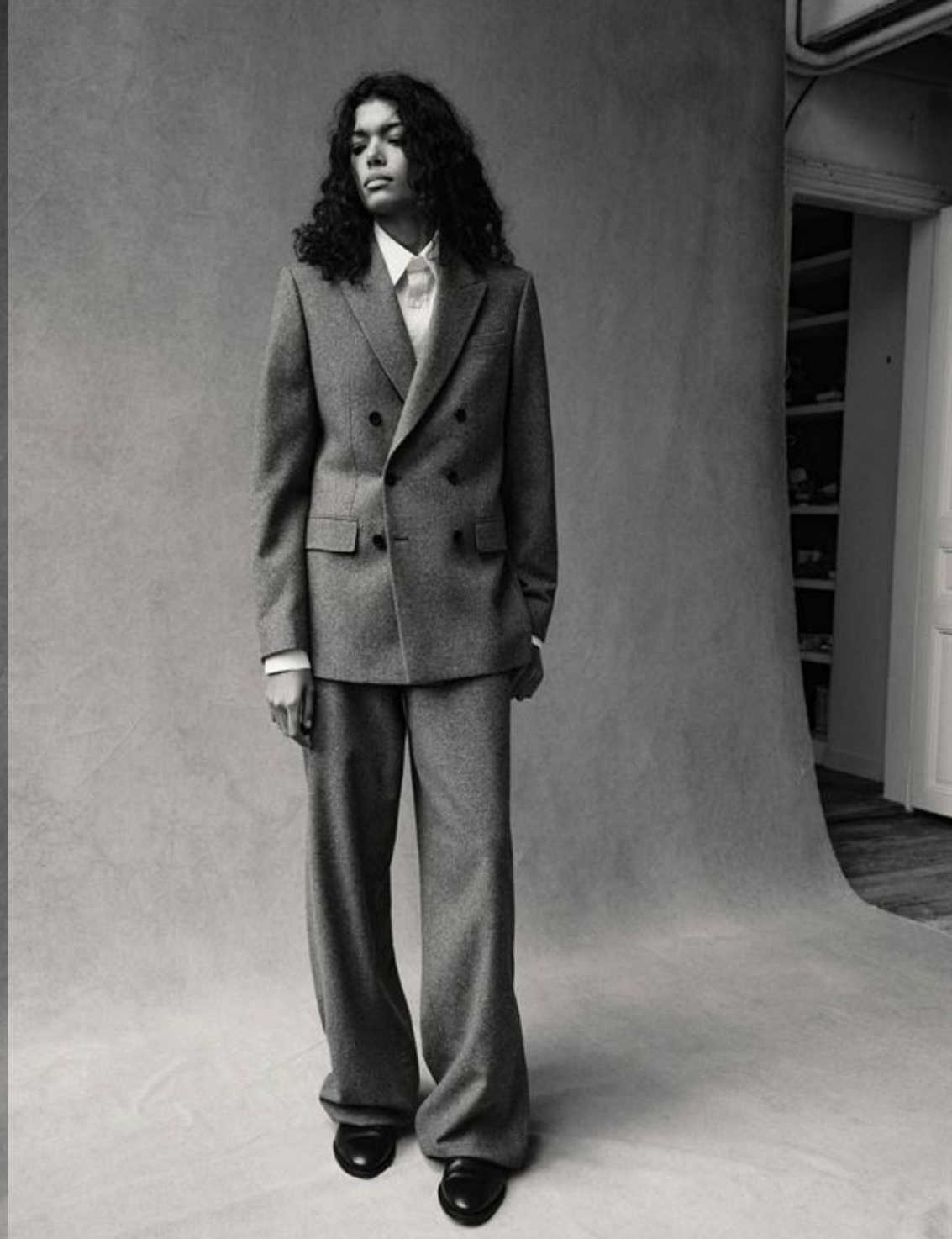
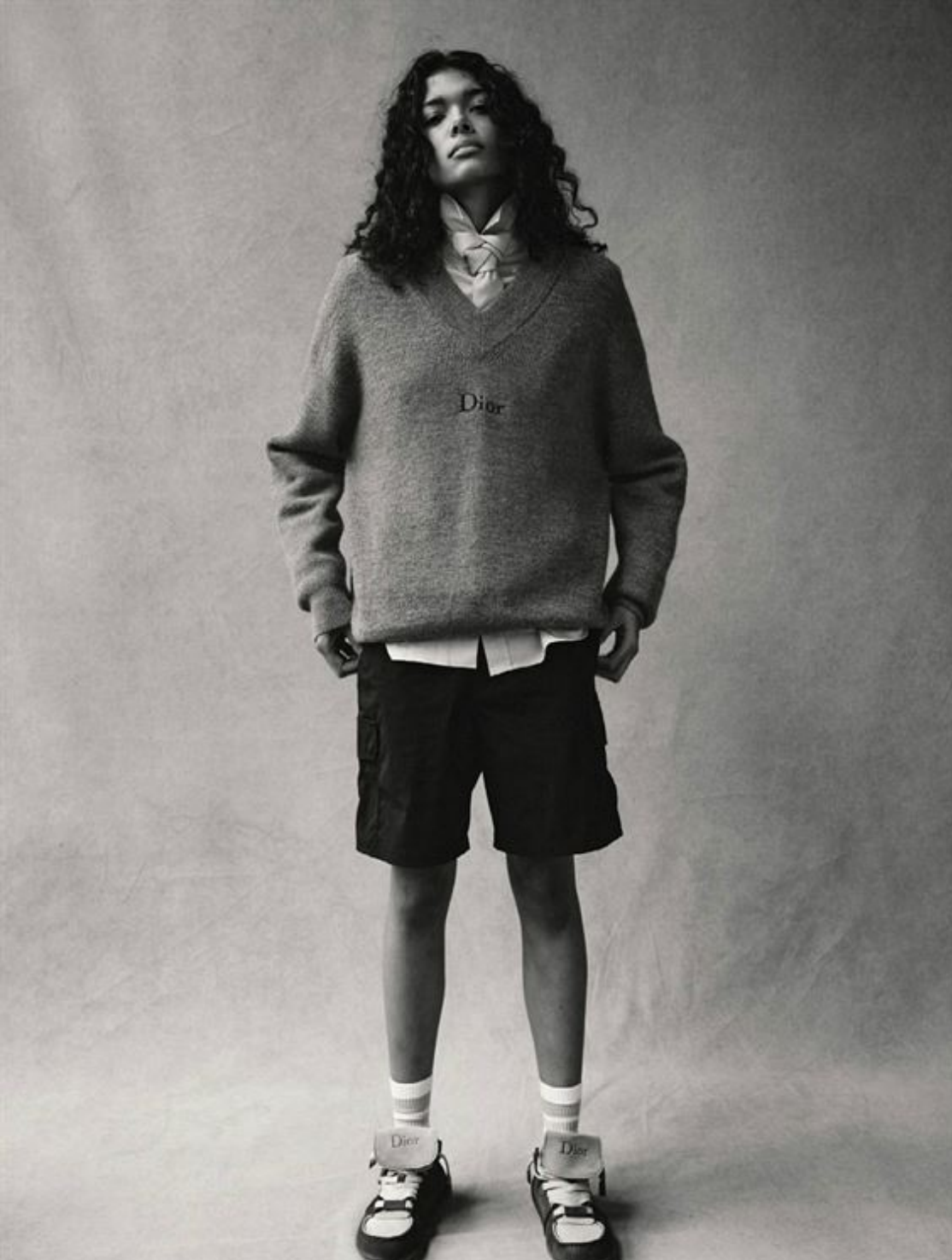
LIVIA EDUARDA

HEIGHT	181 - 5' 11"
BUST	81 - 32"
WAIST	61 - 24"
HIPS	86 - 34"
SHOES	41 - 11
HAIR	brown
EYES	brown

@liviaeduarda_j











SERPENTI VIPERMESH CAT-EYE SUNGLASSES, SERPENTI EARRINGS IN WHITE GOLD WITH DIAMOND, EMERALD AND SAPPHIRE, SERPENTI NECKLACE IN WHITE GOLD WITH BLUE SAPPHIRE AND DIAMOND, SERPENTI SEDUTTORI WATCH IN WHITE GOLD WITH DIAMOND AND BLACK LACQUERED DIAL AND SERPENTI FOREVER BAG IN SILVER CALF LEATHER WITH SNAKEHEAD CLOSURE, ALL BULGARI DRESS AND SANDALS, BOTTEGA VENETA

PHOTOGRAPHY BY STEPHANIE GALEA
STYLING BY JADE CHILTON

The epitome of Italian glamour,
modernity and sophistication,
Bulgari's Serpenti strikes again

MORE THAN A

WHY
NOT



