

# RUIQI JIANG

<b>HEIGHT</b>	177 - 5' 9.5"
<b>BUST</b>	79 - 31"
<b>WAIST</b>	58 - 23"
<b>HIPS</b>	86 - 34"
<b>SHOES</b>	38 - 8
<b>HAIR</b>	black
<b>EYES</b>	black

@ruiqijiang





ELLE



ELLE



GLASS



GLASS









**THIS PAGE**

Slip dress, £1,090, and bodysuit, £450, both Burberry; earrings, £325, Jimmy Choo

**OPPOSITE**

Dress, £2,995, Erdem; leather opera gloves, £354, Paula Rowan; diamond earrings, £5,100, cocktail ring, £29,400, and oval diamond ring, price on request, all De Beers



**THIS PAGE**

Dress, £880, Sportmax; shoes, £790, Miu Miu; Double C de Cartier chain bag, £2,170, Cartier; earrings, £172, Swarovski; tights, £130, Mugler x Wolford

**OPPOSITE**

Jacket, £6,700, Prada



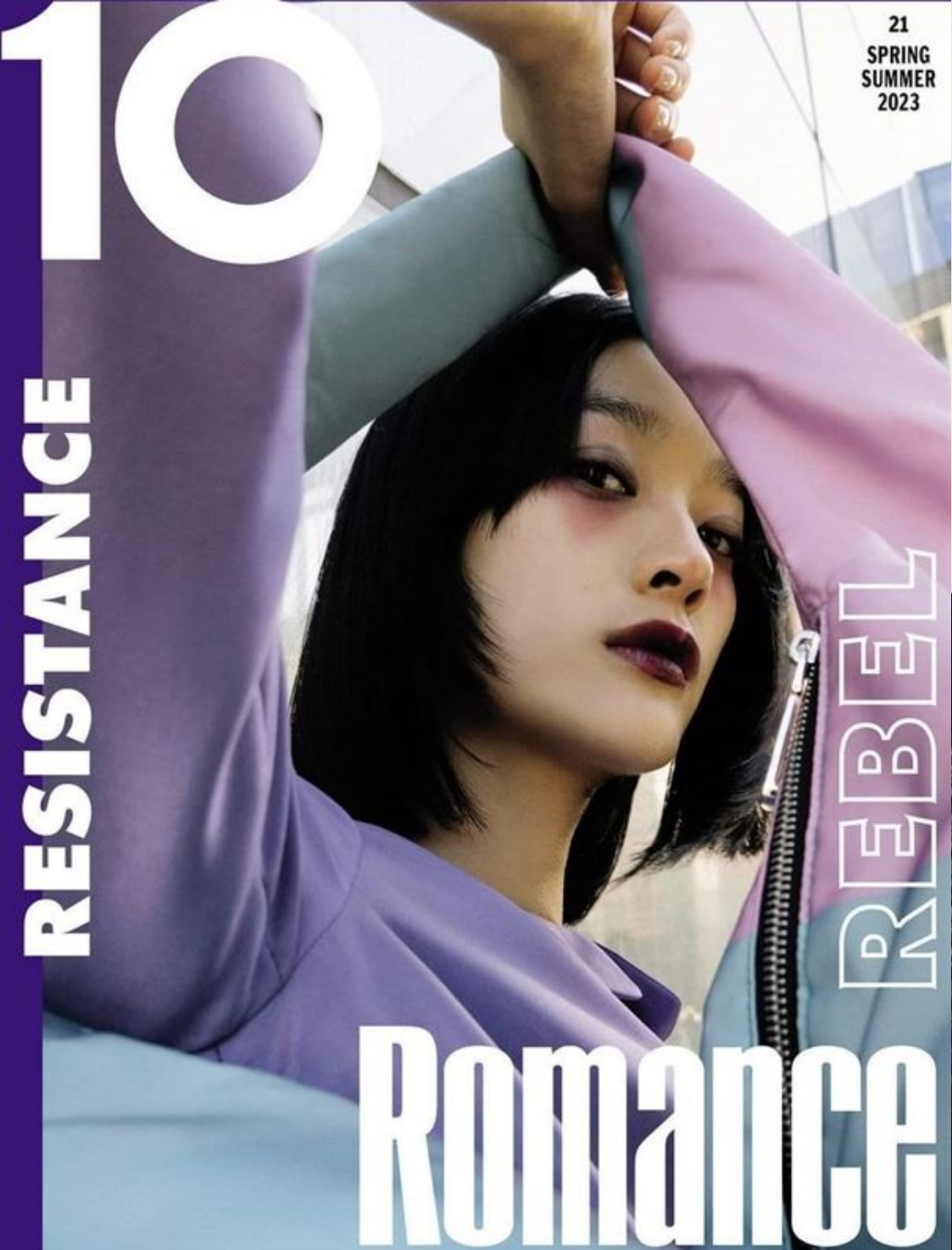


GLASS



GLASS





21  
SPRING  
SUMMER  
2023



VOUE  
THAILAND

BEAUTY

CAPTIVATING  
COLOUR

ปลดปล่อยจินตนาการไปกับสีสัน  
สดชื่นของเมกอัพ เพิ่มพลังความ  
มั่นใจด้วยลุคที่เฉลิมฉลองให้กับ  
ความงามยุคใหม่ที่ไร้ซึ่งกฎเกณฑ์

Photographs by LAN TIAN



T  
China

Powered by  
**self-portrait**



MAI ESTO®

ISSUE 109  
MAY-JULY 2025

DRESS

WITH

DISTINCTION

RUIQI IS  
WEARING PRADA  
PHOTOGRAPHED BY  
JEREMY Z. QIN

