

SAFFRON YIN YING CARY

HEIGHT 171 - 5' 7"
BUST 81 - 32"
WAIST 61 - 24"
HIPS 88 - 35"
SHOES 39 - 9
HAIR dark blonde
EYES brown

@nowheregirlonline





© 2008 XULY Bai Mei BEIBEI BELL A Makeup Artist

WEARING TOGA ARCHIVES DRESS AT LAG WORLD
NEENI, A.E. & RING.

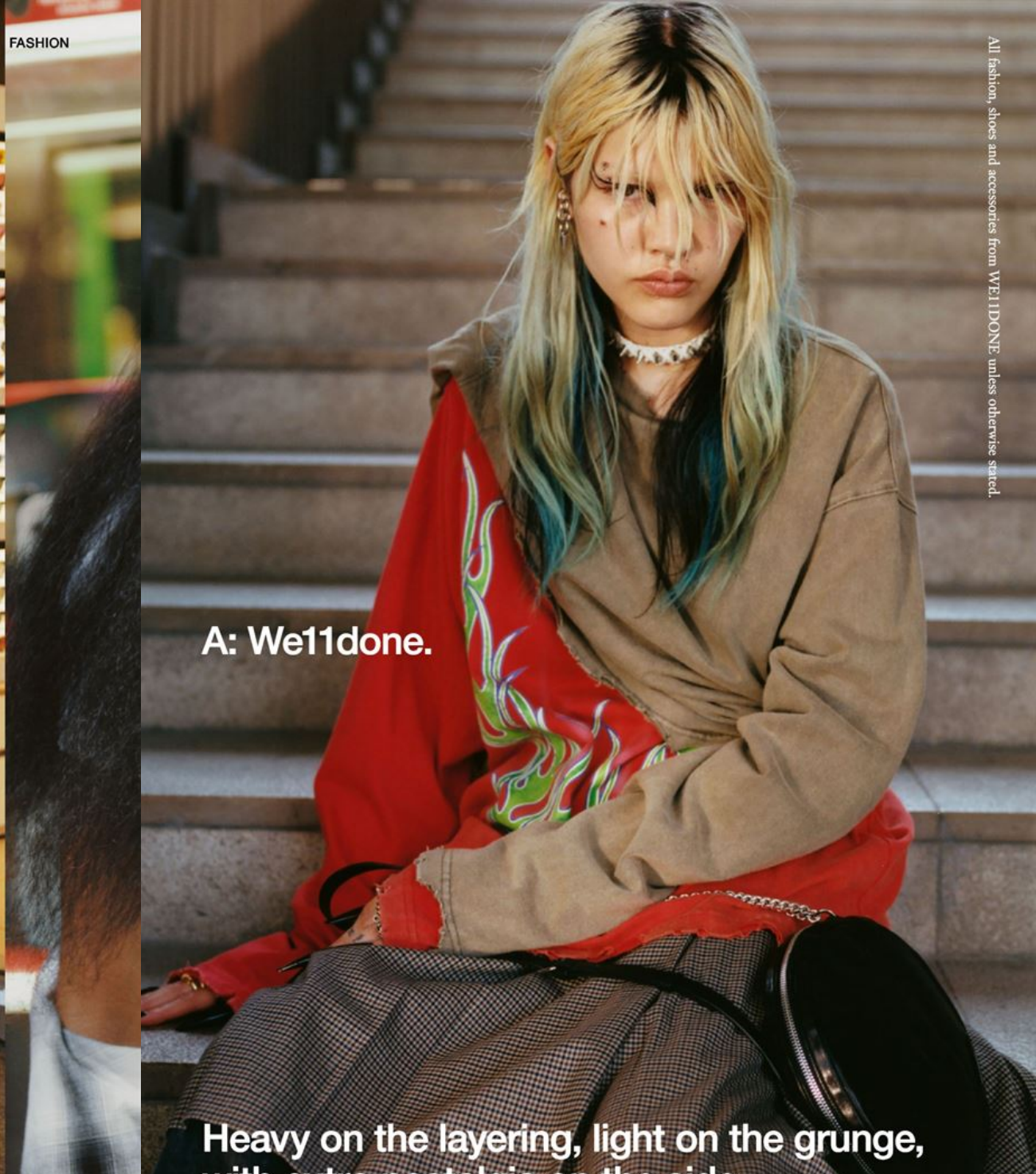


WEARING TOGA ARCHIVES TOP & SHORT HISE PARK BELT PATTAKAPHAN CHOKER NEENI, A.E. LAG WORLD NECKLACE

HardCOPY

WE DRAG COMMANDO BROSSES IT'S STYLISH SHOW CORSET ABBR AM FIVE FINGERS
SHIPS PATTARUPHIA NEKLA CEKIR A DIT LAG WORLD VUCLAI CEE USRINGS & BING

12



A: We11done.

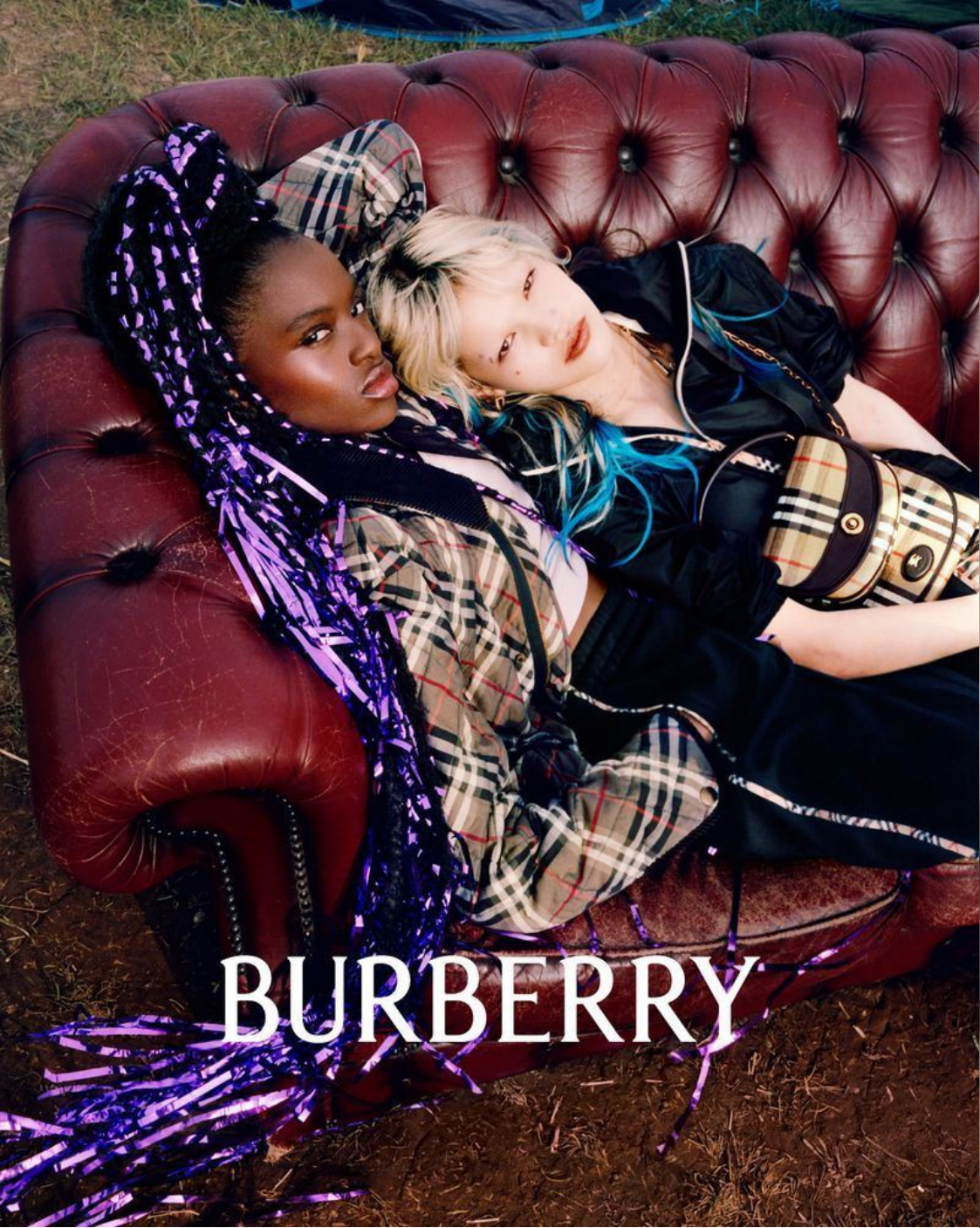
Heavy on the layering, light on the grunge,

All fashion, shoes and accessories from WE11DONE, unless otherwise stated.









BYRIEDS

NEW LIP CARE
BEYOND ADDICTIVE

10

ISSUE 74
Spring / Summer 2025

MUSIC

CREATIVE

TALENT