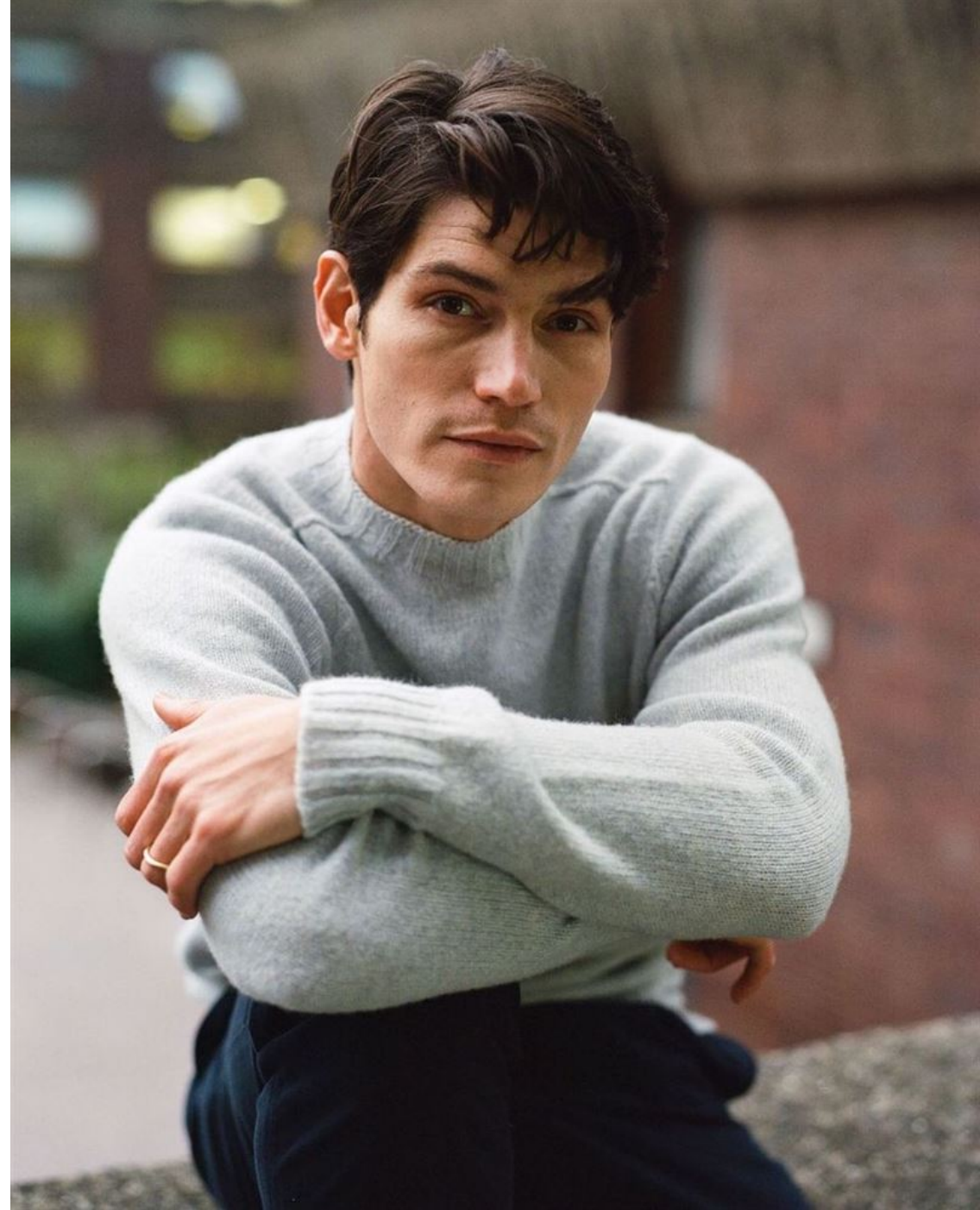


SAM WAY

HEIGHT	184 - 6' 0.5"
BUST	101 - 39"
WAIST	82 - 32"
SHOES	45 - 11.5
HAIR	brown
EYES	brown

@iamsamway



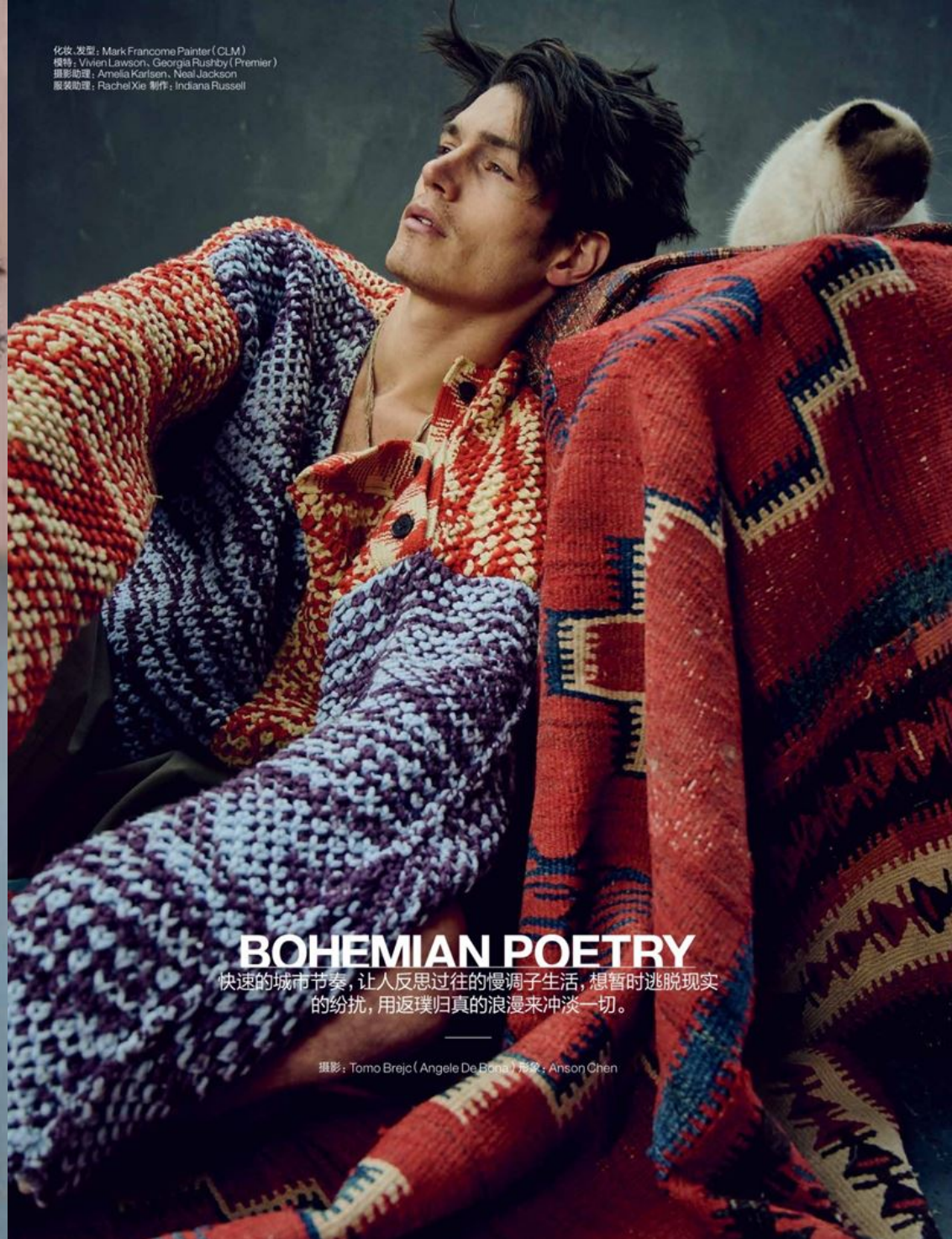






大尺寸毛衣: Jil Sander
皮鞋: Etro

化妆、发型: Mark Francome Painter (CLM)
模特: Vivien Lawson, Georgia Rushby (Premier)
摄影助理: Amelia Karlsen, Neal Jackson
服装助理: Rachel Xie 制作: Indiana Russell



BOHEMIAN POETRY

快速的城市节奏, 让人反思过往的慢调子生活, 想暂时逃脱现实的纷扰, 用返璞归真的浪漫来冲淡一切。

摄影: Tomo Brejc (Angele De Bona) 视觉: Anson Chen













JACKET HUGO BOSS







MENS FASHION MAGAZINE ISSUE #4



© TOMMY HILFGER LICENSING, INC. ALL RIGHTS RESERVED.

tommy

TOMMY HILFGER



THE FRAGRANCES FOR HIM AND HER

tommy girl

tommy