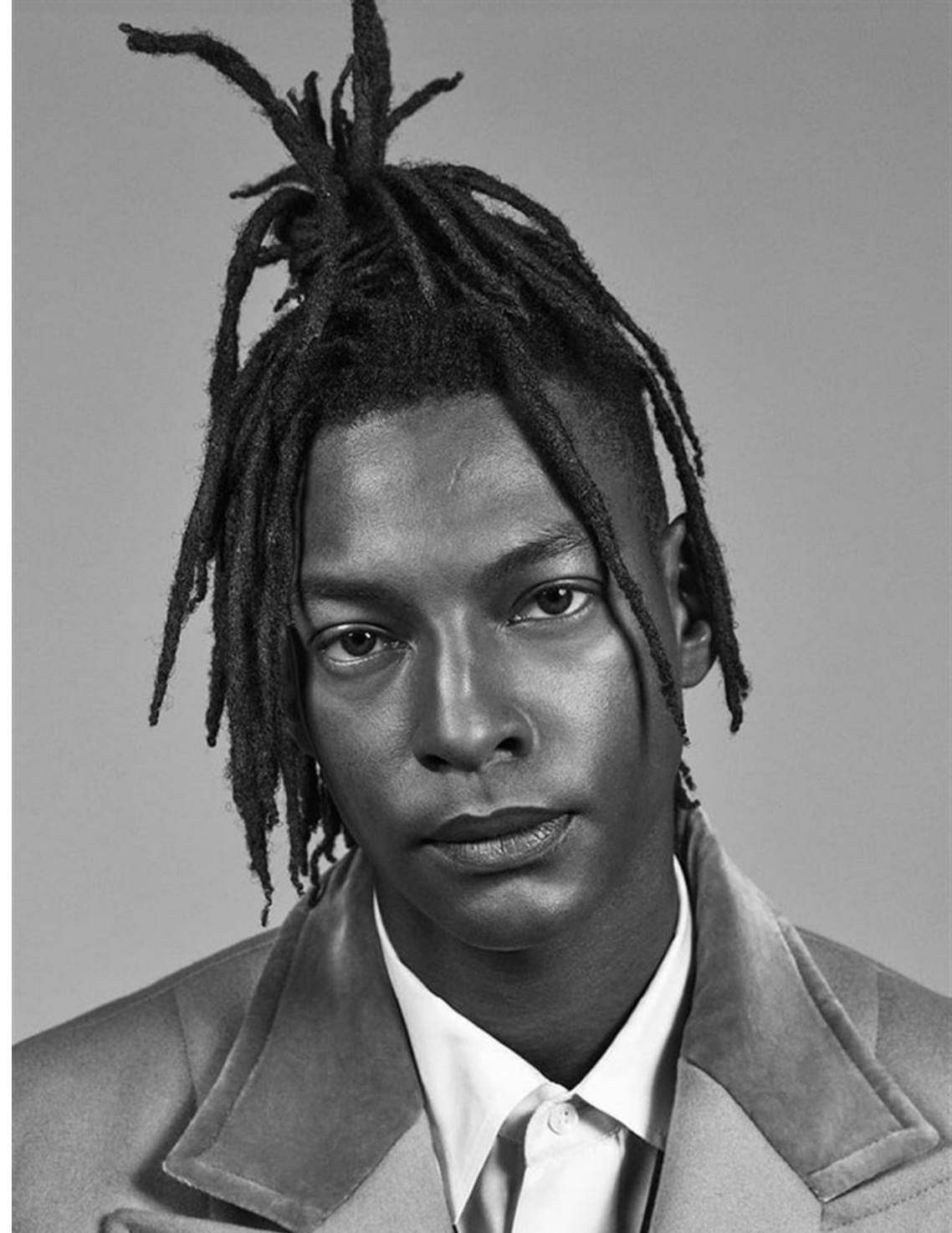


TY

HEIGHT	186 - 6' 1"
BUST	99 - 39"
WAIST	81 - 32"
SHOES	45 - 11.5
HAIR	BLACK
EYES	GREEN

@ty3kingz



Raspberry silk turtleneck,
£960, by HERMES

Right: light blue silk-
virgin wool suit, £695;
navy cotton shirt, £140,
both by BOSS



144



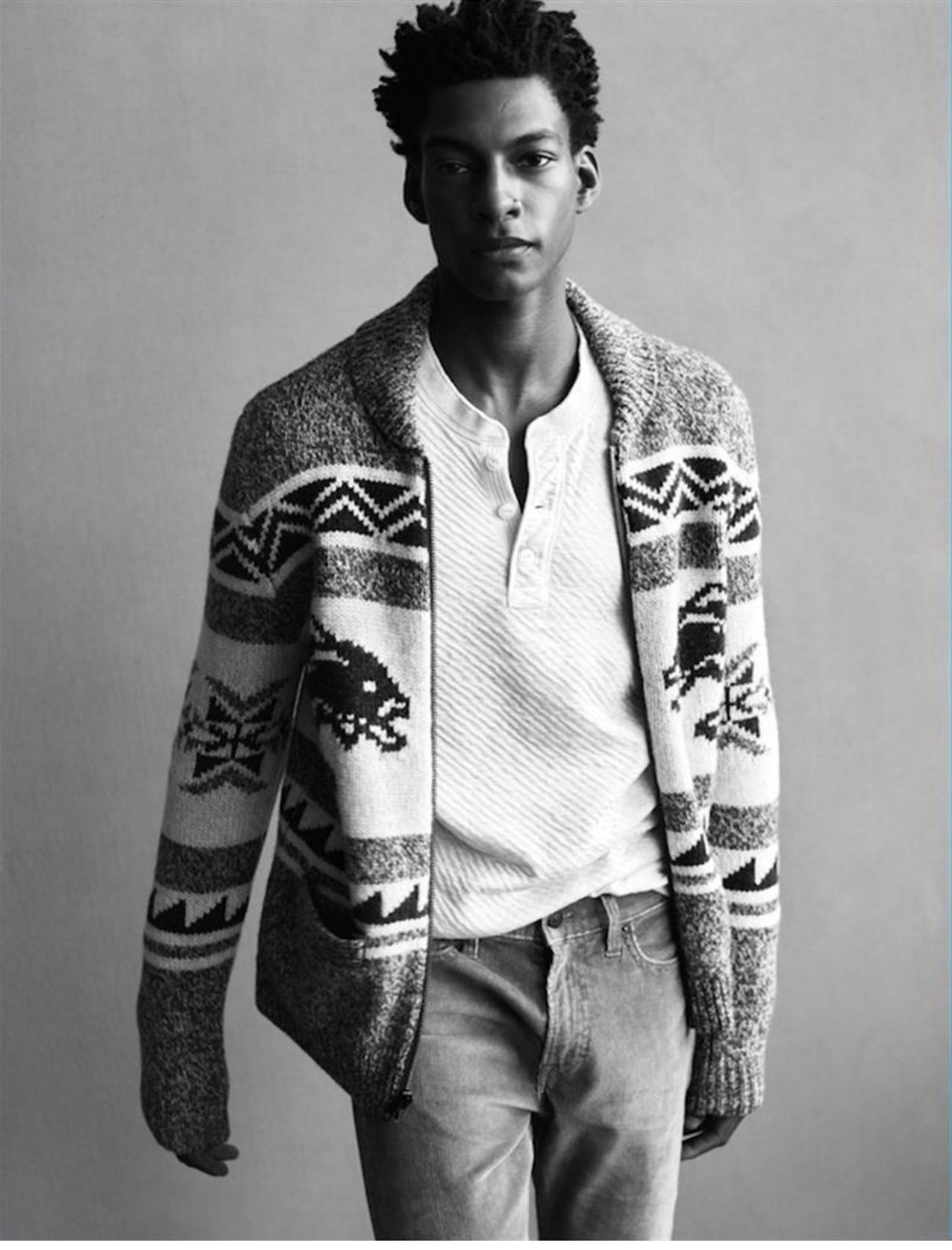
In search of a location fit for the season's best menswear, the *Esquire* fashion team reserved a table at H el ne Darroze at The Connaught. Recently reopened, the results of a two-month refurbishment are exceptional. French interior designer Pierre Yovanovitch has reimaged the main dining room, using deep hues and rich textiles to create a modern, refined space, while the redesigned show kitchen downstairs boasts a Chef's Table where up to 10 guests can dine in an informal setting, with dishes prepared and presented personally by the chefs. The refreshed menu complements the surroundings, too, ensuring the two Michelin-starred restaurant remains the perfect venue for intimate, fine dining — as well as an *Esquire* fashion shoot. *Carlos Place, Mayfair, London W1; the-connaught.co.uk*















DAVID
NAMAN



COACH

THE NEW FRAGRANCE

COACH
OPEN ROAD







#ThisIsFamily

RI

RIVERISLAND.COM